

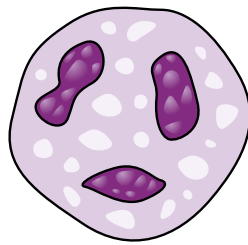
Erythrozyt

\varnothing 7 – 8 μm

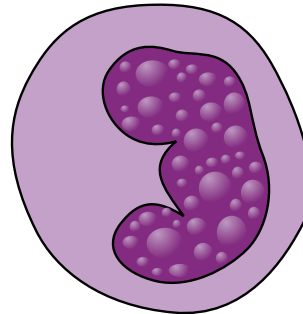
$5000 \cdot 10^9 \cdot \text{l}^{-1}$

Leukozyten

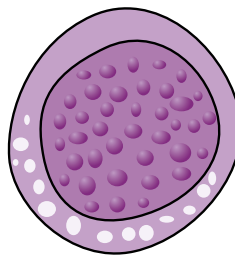
$7 \cdot 10^9 \cdot \text{l}^{-1}$



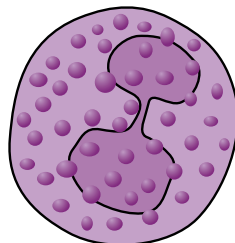
neutrophiler
Granulozyt
59 %



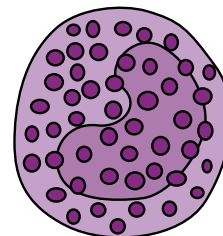
Monozyt
6,5 %



Lymphozyt
31 %



eosinophiler
Granulozyt
2,4 %



basophiler
Granulozyt
0,6 %